



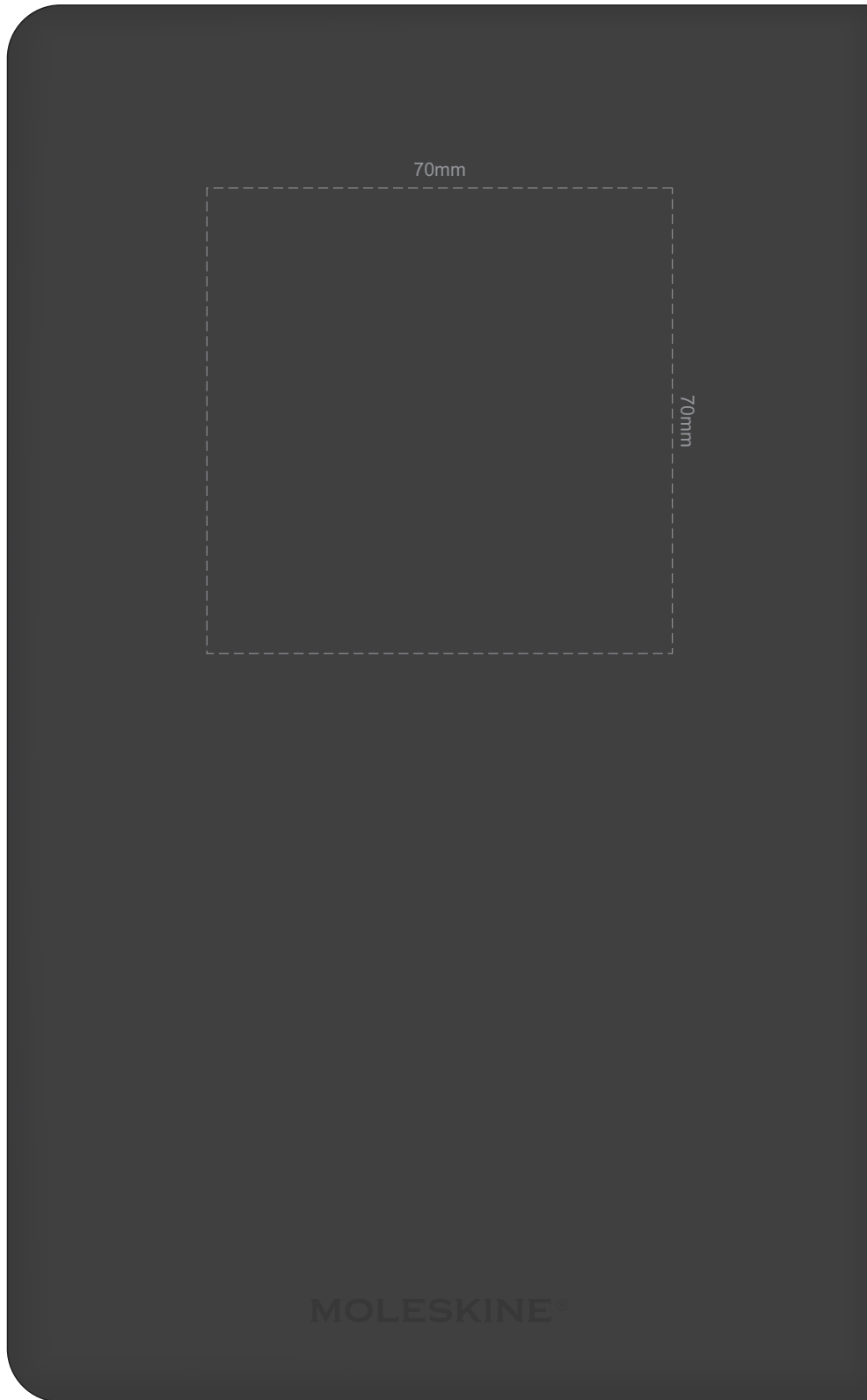
100% of Actual Size  
Debossing  
Debossing XL



Print area 100 x 90mm is moveable within the XL deboss area and can rotate to suit.

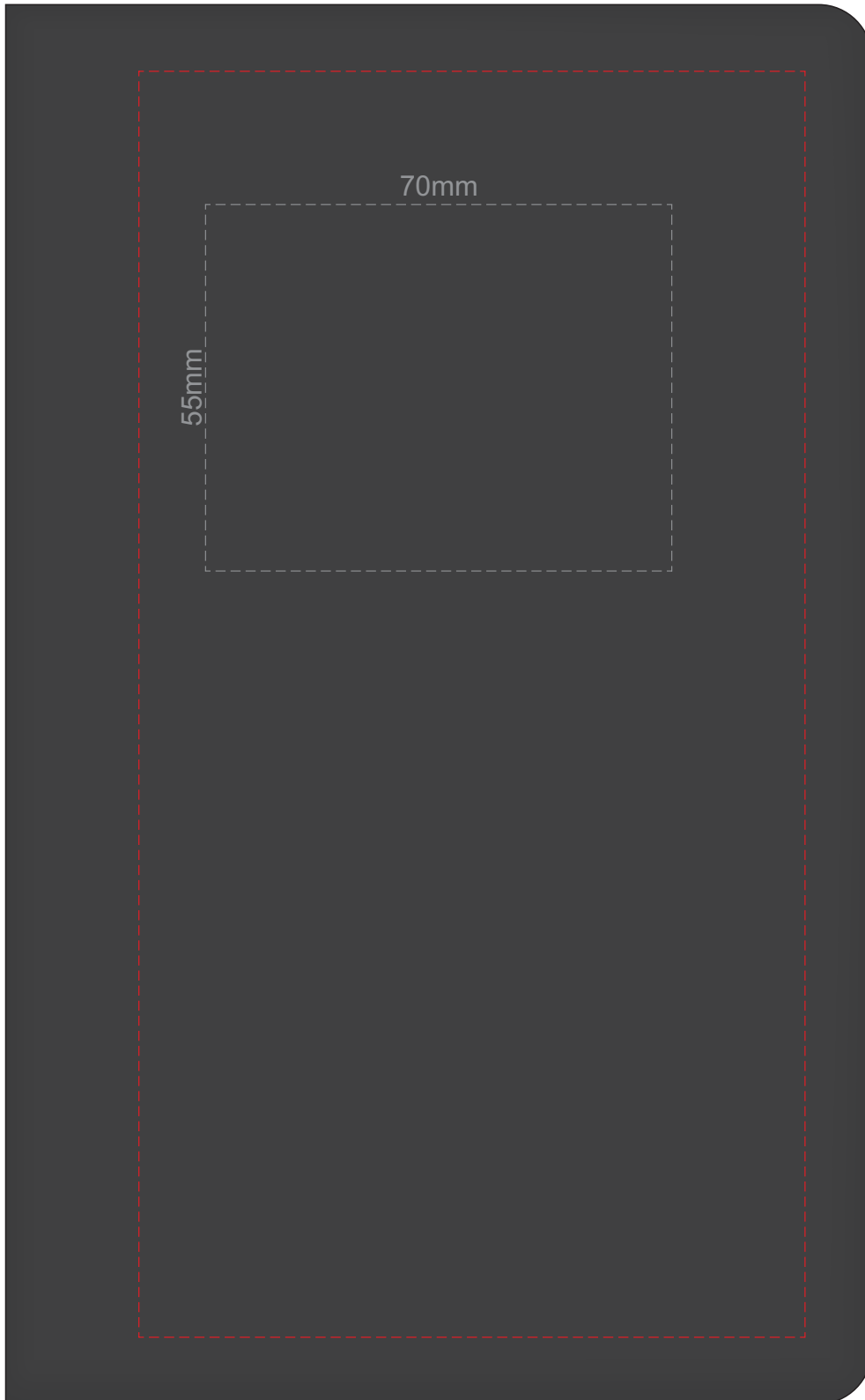


100% of Actual Size  
Debossing Back Cover








100% of Actual Size  
Foil Printing Front Cover  
FRONT ONLY



Please note: Print area 70mm x 55mm is **moveable within the red dotted area**, the print area cannot be rotated. The printing will inherit the texture of the substrate which may affect the legibility of small text or appearance of fine detail.

-  Copper Foil Print Colour
-  Silver Foil Print Colour
-  Gold Foil Print Colour



70% of Actual Size  
Pad Print Front End-Paper

The diagram shows a yellow rectangular area representing the front end-paper. A large red dashed rectangle outlines the main area. Inside this, a smaller black dashed rectangle is centered, with dimensions 55mm (width) and 35mm (height). Within this black dashed rectangle, a white dashed rectangle is centered, with dimensions 65mm (width) and 55mm (height). At the bottom center of the yellow area, there is a small grid of nine squares (3x3) with the letter 'M' to its left.

In case of loss, please return to:

---

---

---

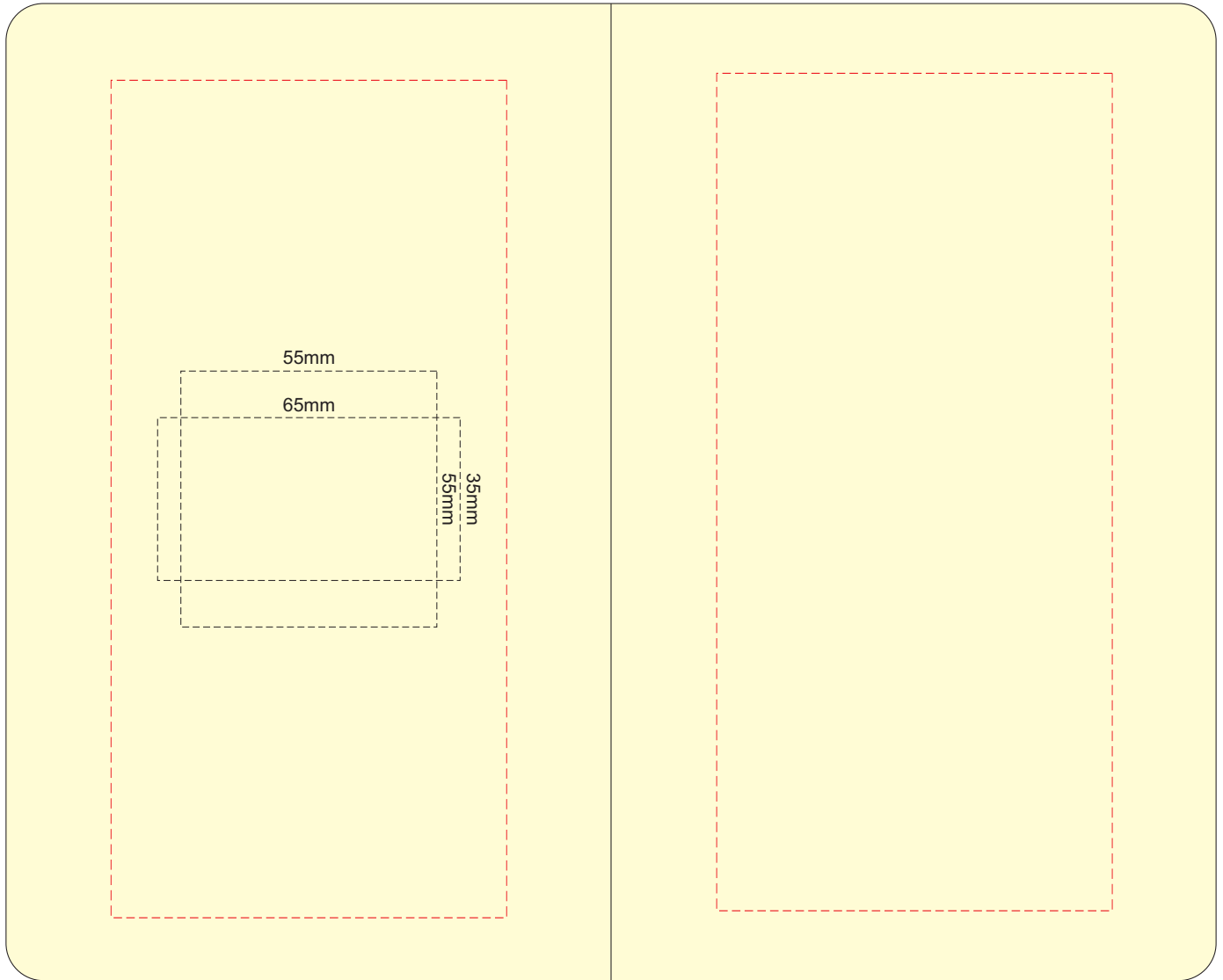
---

As a reward: \$ \_\_\_\_\_

Branding area can be moved anywhere within the red lines.



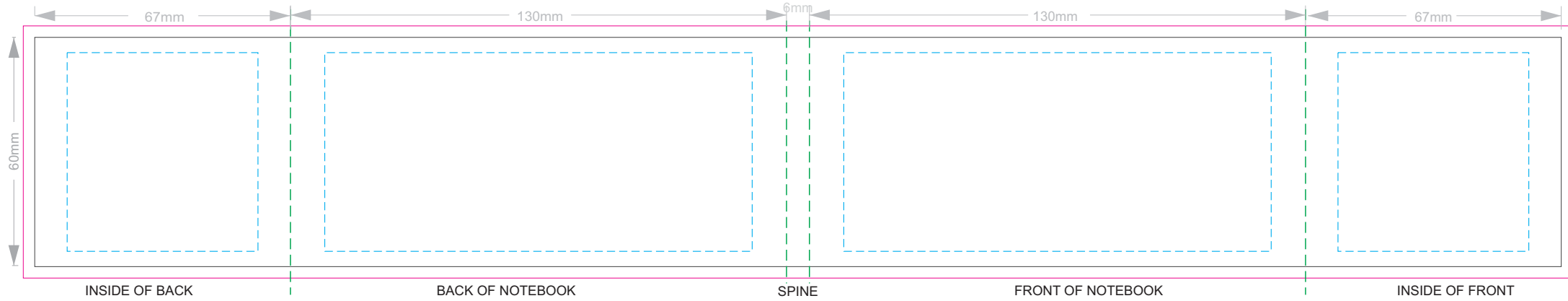
70% of Actual Size  
Pad Print Back End-Paper



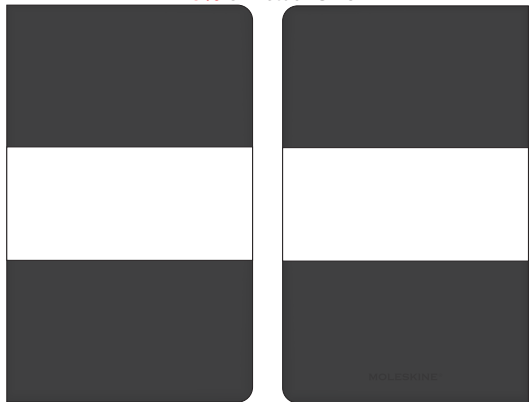
Branding area can be moved anywhere within the red lines.



70% of Actual Size  
Digital Print - Belly Band Template



25% of Actual Size



FRONT

Belly Band Assembled on Notebook

BACK

- Green Line = Fold Lines when assembled on notebook
- Blue Line = The SIGNIFICANT PRINT AREA  
(Keep all critical images & text within this box)
- Black Line = Maximum print area
- Pink Line = Bleed off to here